



August 1997

EMBARGO: 11:30 AM (CANBERRA TIME) MON 13 OCT 1997

Commercial Finance

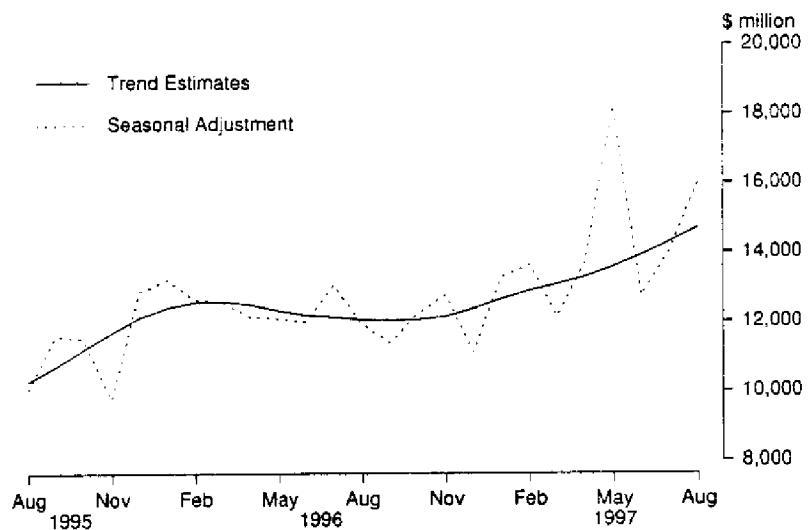
Australia

Data Report

© Commonwealth of Australia 1997

MAIN FEATURES

COMMERCIAL FINANCE, AUSTRALIA, AUGUST 1995 - AUGUST 1997



1 The provisional trend estimate for commercial finance commitments made by significant lenders in August 1997 totalled \$14 702.2 million, an increase of \$414.9 million (2.9%) on July 1997 and an increase of \$2 647.3 million (22.0%) on August 1996.

2 Seasonally adjusted commercial finance commitments totalled \$15 994.9 million in August 1997, an increase of \$1 944.3 million (13.8%) on July 1997 and an increase of \$4 083.1 million (34.3%) on August 1996. There is some evidence that a change may be occurring in the seasonal and trading day patterns of the Revolving Credit component of Commercial Finance. In these circumstances especially, the trend estimate data provide the most reliable indicator of underlying movement in commitments.

3 In original terms commercial finance commitments in August 1997 totalled \$14 541.9 million, a decrease of \$1 433.0 million (9.0%) on July 1997 but an increase of \$3 483.9 million (31.5%) on August 1996.

INQUIRIES

- for further information about these and related statistics, contact Greg Smith on (02) 9268 4537 or at <http://greg.smith@abs.gov.au>.
- for information about other ABS statistics and services please refer to the back cover.

COMMERCIAL FINANCE COMMITMENTS: SUMMARY OF MOVEMENTS IN MAJOR AGGREGATES: Original, seasonally adjusted and trend estimates, AUGUST 1997

Type of facility	Percentage change from previous month			Percentage change from corresponding month of previous year		
	Original	Seasonally adjusted	Trend	Original	Seasonally adjusted	Trend
	%	%	%	%	%	%
Fixed Loans	-13.1	9.1	1.3	26.3	31.1	19.0
Revolving Credit	-4.8	18.1	4.3	36.7	37.0	24.7
Total	-9.0	13.8	2.9	31.5	34.3	22.0

COMMERCIAL FINANCE COMMITMENTS: MAJOR AGGREGATES: Original, seasonally adjusted and trend estimates

Month	Commitments under fixed loan facilities			Commitments under revolving credit facilities			Total commitments		
	Original	Seasonally adjusted	Trend	Original	Seasonally adjusted	Trend	Original	Seasonally adjusted	Trend
	\$ million	\$ million	\$ million	\$ million	\$ million	\$ million	\$ million	\$ million	\$ million
1996 —									
June	7 700.0	6 026.7	5 761.9	6 841.2	5 954.1	6 415.0	14 541.2	11 980.8	12 176.9
July	6 961.2	6 096.7	5 765.4	7 595.6	6 937.0	6 359.2	14 556.8	13 033.7	12 124.6
August	5 555.9	5 501.3	5 791.9	5 502.1	6 410.5	6 263.0	11 058.0	11 911.8	12 054.9
September	5 494.9	5 860.1	5 847.5	5 350.3	5 512.5	6 172.1	10 845.1	11 372.5	12 019.6
October	5 425.0	5 486.8	5 926.7	6 100.7	6 725.0	6 120.2	11 525.7	12 211.8	12 047.0
November	5 696.5	6 343.6	6 028.2	6 195.7	6 420.9	6 118.0	11 892.2	12 764.5	12 146.2
December	6 743.4	6 322.2	6 170.3	6 203.2	4 789.5	6 190.7	12 946.6	11 111.8	12 360.9
1997 —									
January	5 183.1	6 413.2	6 319.2	6 740.8	6 855.7	6 323.5	11 923.9	13 268.9	12 642.7
February	5 086.0	6 204.6	6 426.6	5 825.1	7 433.3	6 455.5	10 911.1	13 637.9	12 882.1
March	6 376.6	6 278.7	6 493.5	5 437.9	5 854.4	6 576.5	11 814.5	12 133.1	13 070.0
April	6 478.6	6 905.2	6 552.8	7 457.5	6 759.4	6 736.2	13 936.0	13 664.6	13 288.9
May	8 789.7	8 575.9	6 629.4	8 668.6	9 623.8	6 943.6	17 458.3	18 199.8	13 573.0
June	8 185.4	6 374.6	6 716.0	7 482.3	6 361.0	7 198.8	15 667.7	12 735.6	13 914.8
July	8 073.3	6 613.7	6 801.3	7 901.6	7 437.0	7 485.9	15 974.9	14 050.6	14 287.3
August	7 018.3	7 214.6	6 892.1	7 523.6	8 780.2	7 810.2	14 541.9	15 994.9	14 702.2

TABLE 1 — COMMERCIAL FINANCE COMMITMENTS — AUGUST 1997
(\$ million)

Purpose of commitment by type of facility	Type of lender				Total
	All banks	Finance companies	Money market corporations	Other lenders	
AUSTRALIA					
Commitments under fixed loan facilities —					
Construction finance for —					
Erection of —					
Dwellings for rental/resale	316.5	83.0	—	—	399.5
Non-residential buildings					
Shops	23.3	1.5	—	—	24.8
Offices	16.2	1.6	—	—	17.8
Industrial	29.5	1.8	—	—	31.3
Other	26.6	—	20.4	—	47.0
Total	95.5	5.0	20.4	—	120.9
Non-building structures	4.4	—	287.9	—	292.3
Alterations and/or additions	45.7	—	—	—	45.7
Purchase of real property —					
Dwellings for rental/resale by —					
Individuals	1,275.4	—	—	170.0	1,445.4
Other	233.6	0.4	0.5	—	234.5
Non-residential buildings					
Shops	79.4	—	—	—	79.4
Offices	47.5	—	—	—	47.5
Industrial	82.2	0.2	0.5	—	82.8
Other	60.7	1.8	—	—	62.5
Total	269.7	2.0	0.5	—	272.2
Rural property	110.3	—	—	—	110.3
Other land —					
For residential block development	36.1	26.0	—	—	62.0
Other	60.6	4.5	—	—	65.2
Wholesale finance	141.7	0.5	24.5	283.8	450.5
Purchase of plant and equipment —					
Motor vehicles	72.6	198.1	5.8	62.2	338.7
Other transport equipment	17.6	20.7	—	0.1	38.3
Other	307.5	85.5	16.3	—	409.4
Factoring	87.6	94.0	—	—	181.6
Refinancing	1,131.3	0.9	2.4	—	1,134.5
Other	1,290.7	33.9	—	92.6	1,417.2
<i>Total fixed loan facilities</i>	<i>5,496.8</i>	<i>554.5</i>	<i>358.4</i>	<i>608.5</i>	<i>7,018.3</i>
Commitments under revolving credit facilities —					
<i>New and increased credit limits</i>	<i>5,655.5</i>	<i>12.2</i>	<i>1,759.4</i>	<i>96.5</i>	<i>7,523.6</i>
Total commercial finance commitments	11,152.3	566.7	2,117.8	705.0	14,541.9
STATES(a)					
New South Wales	5,687.2	180.3	1,556.1	370.7	7,794.2
Victoria	2,827.0	115.0	558.3	149.5	3,649.9
Queensland	1,268.3	n.p.	3.4	n.p.	1,505.1
South Australia	293.6	n.p.	—	n.p.	377.0
Western Australia	880.5	54.1	—	50.3	984.9
Tasmania	74.4	n.p.	—	n.p.	85.9
Northern Territory	44.4	7.4	—	2.3	54.1
Australian Capital Territory	77.0	n.p.	—	n.p.	90.8

(a) From July 1996 Finance Companies and Other Lenders data is not available for publication for Tasmania and the ACT, but is included in totals where applicable.

TABLE 2 — COMMERCIAL FINANCE COMMITMENTS — ALL LENDERS
(\$ million)

YEARS	Commitments under fixed loan facilities for -											
	Construction finance for -					Purchase of real property						
	Erection of -					Other land						
	Dwellings for rental/lease	Non-residential buildings	Non-building structures	Alterations and/or additions	Dwellings for rental/lease	Non-residential buildings	Rural property	Residential block development	Other	Motor vehicles	Other transport equipment	
AUSTRALIA												
1994-1995	2,755.8	1,388.2	621.2	488.7	11,412.8	3,551.3	916.7	1,156.7	693.6	3,883.4	539.5	2,665.1
1995-1996	2,735.3	1,906.8	1,115.5	818.0	11,884.7	4,555.7	1,259.1	983.7	932.7	4,095.0	880.2	2,530.0
1996-1997	3,523.5	1,864.1	1,310.7	736.3	16,496.0	4,335.6	1,283.8	822.2	1,563.0	4,017.7	768.4	4,941.7
1996												
June	193.8	148.3	50.8	58.5	1,026.9	388.7	114.4	103.2	99.7	357.4	103.4	295.8
July	254.0	169.3	71.3	59.2	1,037.4	347.3	116.2	109.8	119.0	339.0	43.5	360.8
August	481.8	174.8	85.9	65.7	974.7	446.7	95.1	45.1	82.6	321.2	38.9	305.0
September	258.6	150.7	155.9	61.0	1,097.3	325.1	95.4	58.6	70.8	339.9	124.6	234.3
October	237.6	149.0	128.8	68.9	1,206.9	349.5	75.4	58.1	62.7	351.4	106.2	233.3
November	248.9	119.7	57.9	47.4	1,320.9	364.2	90.1	100.4	63.6	348.1	105.9	221.5
December	206.2	156.2	242.4	51.9	1,318.0	429.6	83.2	90.7	82.6	348.3	38.3	346.2
1997												
January	219.8	158.4	51.3	40.2	1,352.7	303.3	91.6	58.2	78.2	281.3	31.7	201.9
February	209.6	146.5	25.1	40.5	1,407.2	358.7	102.5	66.5	55.6	324.4	32.7	244.5
March	296.9	167.7	62.6	79.7	1,474.5	386.4	129.9	52.7	421.9	312.7	35.8	283.3
April	361.1	156.4	22.0	56.2	1,716.3	294.5	135.4	53.7	76.0	347.1	100.8	811.0
May	308.6	121.2	333.0	75.8	1,735.1	309.1	117.0	67.0	357.0	344.9	43.7	1,456.0
June	380.3	194.3	74.5	89.7	1,854.9	421.1	152.0	61.5	93.0	359.3	66.4	243.9
July	463.0	254.8	17.0	63.3	1,794.3	1,030.1	135.8	70.6	67.0	368.5	45.3	210.5
August	399.5	120.9	292.3	45.7	1,679.9	272.2	110.3	62.0	65.2	338.7	38.3	409.4
STATES — JULY 1997												
N.S.W.	321.1	81.3	13.7	31.1	816.4	200.7	32.3	28.6	19.8	92.7	11.7	54.0
Vic.	40.4	84.3	2.3	7.1	321.4	58.7	33.2	5.0	20.7	112.1	8.2	57.4
Qld	70.8	66.2	0.4	17.3	398.9	694.2	31.4	26.3	10.2	66.3	10.2	34.8
S.A.	6.3	5.8	0.4	1.5	52.6	19.9	23.9	3.2	3.9	37.4	6.9	20.9
W.A.	11.9	11.7	0.1	4.2	126.8	46.7	9.9	5.2	9.7	43.5	2.9	34.6
Tas.	2.1	2.2	—	1.2	17.1	3.3	4.3	0.1	0.8	8.8	1.5	4.9
N.T.	3.1	1.9	—	—	19.1	1.3	0.2	0.1	1.0	5.8	3.9	3.6
A.C.T.	7.4	1.4	—	0.9	42.0	5.2	0.6	2.2	0.8	1.8	—	0.3
STATES — AUGUST 1997												
N.S.W.	234.4	48.0	290.6	26.7	770.1	87.2	33.3	14.6	24.1	85.8	9.0	273.5
Vic.	63.8	26.6	0.6	7.8	331.5	45.6	23.6	3.5	7.7	104.7	6.9	54.3
Qld	68.3	27.2	0.9	3.9	317.4	63.1	33.4	33.8	12.4	59.8	10.5	30.4
S.A.	11.8	4.3	0.1	2.3	47.6	22.0	5.9	4.0	4.3	38.4	4.3	14.5
W.A.	15.4	14.0	0.2	4.2	143.7	45.5	5.7	2.9	15.0	37.0	5.4	28.1
Tas.	0.8	0.1	—	0.2	13.5	4.4	7.8	0.2	0.7	6.9	0.4	5.6
N.T.	1.1	0.5	—	0.5	23.8	1.8	0.1	0.8	0.8	4.4	1.5	2.2
A.C.T.	3.9	0.2	—	0.1	32.2	2.6	0.6	2.1	0.3	1.6	0.2	0.6

TABLE 2 — COMMERCIAL FINANCE COMMITMENTS — ALL LENDERS — continued
(\$ million)

YEARS	Commitments under fixed loan facilities for -										Commitments under revolving credit facilities for -		
	Wholesale finance	Factoring	Refinancing	Other commitments	Total	Debt participation in leveraged leases (included in total)	Commitments not drawn at end of period	New and increased credit limits during month	Cancellations and reductions of credit limits during period (a)	Credit limits at end of period			
										Total	Used		
AUSTRALIA													
1994-1995	3,857.3	805.9	7,999.5	7,783.9	50,519.6	181.9	5,916.4	53,811.8	40,758.8	145,822.7	93,061.1		
1995-1996	4,543.9	1,410.3	11,313.3	13,352.8	64,317.3	1.8	6,808.5	75,016.5	50,147.8	163,867.2	103,903.2		
1996-1997	4,498.0	1,544.5	12,680.0	15,590.8	75,976.3	195.8	5,835.8	78,559.8	52,605.9	190,616.3	106,968.8		
1996													
June	498.6	88.7	1,516.6	2,655.4	7,700.0	—	6,808.5	6,841.2	4,535.1	163,867.2	103,903.2		
July	535.6	185.9	1,635.5	1,577.4	6,961.2	2.5	6,607.8	7,595.6	5,077.7	171,891.3	106,869.3		
August	320.8	131.6	1,061.8	924.2	5,555.9	4.3	6,282.0	5,502.1	3,566.2	173,526.2	107,117.1		
September	325.7	106.3	819.1	1,271.6	5,494.9	15.9	6,170.5	5,350.3	4,374.3	173,607.5	107,747.2		
October	354.2	110.9	1,130.9	801.2	5,425.0	8.3	6,375.0	6,100.7	4,198.8	175,542.4	108,315.3		
November	326.1	180.3	865.7	1,235.8	5,696.5	8.5	6,149.9	6,195.7	4,571.8	175,712.5	107,461.0		
December	294.8	99.4	1,244.9	1,710.8	6,743.4	20.3	5,863.2	6,203.2	4,689.1	177,965.9	105,242.7		
1997													
January	377.0	116.1	856.9	964.4	5,183.1	64.9	5,522.3	6,740.8	5,164.9	178,774.0	104,570.7		
February	423.8	107.6	731.3	749.5	5,086.0	12.4	5,429.4	5,825.1	3,369.1	180,832.3	103,173.7		
March	349.1	124.7	1,041.6	1,157.4	6,376.6	11.1	5,672.3	5,437.9	3,555.5	182,585.4	103,396.8		
April	351.1	144.1	1,032.4	820.4	6,478.6	—	5,451.1	7,457.5	4,483.5	183,862.6	103,872.8		
May	421.9	101.9	1,029.9	1,967.6	8,789.7	9.5	6,130.3	8,668.6	4,950.4	187,785.7	104,445.4		
June	418.0	135.8	1,230.1	2,410.6	8,185.4	38.0	5,835.8	7,482.3	4,604.6	190,616.3	106,968.8		
July	509.1	120.3	993.5	1,930.1	8,073.3	28.9	5,953.9	7,901.6	4,820.8	194,232.7	109,686.3		
August	450.5	181.6	1,134.5	1,417.2	7,018.3	11.8	5,810.5	7,523.6	4,919.8	195,394.4	108,592.7		
STATES — JULY 1997													
N.S.W.	189.4	45.5	313.8	545.1	2,797.1	—	3,020.1	4,149.6	2,522.0	94,957.8	50,411.5		
Vic.	150.4	16.3	191.0	954.9	2,063.5	—	1,010.7	2,470.0	1,281.3	65,550.4	38,631.6		
Qld	76.8	19.1	228.5	161.4	1,912.9	—	1,049.0	662.3	466.9	15,877.5	9,660.7		
S.A.	21.1	22.1	101.7	91.8	419.3	—	522.8	220.9	165.1	6,841.2	4,127.5		
W.A.	65.8	17.4	113.3	137.0	640.7	28.9	243.1	317.0	261.8	8,495.4	5,308.8		
Tas.	2.0	—	11.4	21.5	81.3	—	41.5	18.1	57.7	1,047.7	488.0		
N.T.	2.2	—	4.1	6.0	52.3	—	24.5	19.5	10.3	458.4	315.9		
A.C.T.	1.3	0.1	29.7	12.5	106.1	—	42.2	44.2	55.8	1,004.3	742.4		
STATES — AUGUST 1997													
N.S.W.	234.9	85.1	556.3	788.4	3,562.1	—	3,102.9	4,232.1	3,115.1	94,684.9	49,707.4		
Vic.	86.6	49.1	256.9	386.9	1,456.1	—	1,208.4	2,193.8	1,221.2	66,535.5	38,272.7		
Qld	65.6	18.9	160.8	106.2	1,012.5	—	658.6	492.6	248.7	16,059.5	9,695.3		
S.A.	25.5	13.1	37.2	34.2	269.7	—	517.7	107.2	85.2	6,866.7	4,125.3		
W.A.	35.8	14.9	99.4	80.3	547.5	11.8	243.4	437.3	181.7	8,737.8	5,265.5		
Tas.	0.8	—	13.7	8.4	63.7	—	27.2	22.2	39.1	1,040.9	484.4		
N.T.	0.2	—	2.5	2.3	42.4	—	18.5	11.6	6.1	466.5	315.3		
A.C.T.	1.2	0.5	7.6	10.5	64.2	—	33.8	26.6	22.7	1,002.5	726.7		

(a) Includes transfers of existing commitments between States.

TABLE 3 — COMMERCIAL FINANCE COMMITMENTS — ALL LENDERS — FIXED LOAN FACILITIES, BY INDUSTRY OF BORROWER
(\$ million)

YEARS	Agriculture, forestry, fishing and hunting	Mining	Manu- facturing	Construction	Wholesale trade	Retail trade	Transport and storage	Finance, investment and insurance	Property and business services	Recreation and other services	Public administration	Community services	Other industries	Total
AUSTRALIA														
1994-1995	3,341.4	1,321.3	2,918.0	3,250.9	3,866.6	3,913.3	1,799.7	3,685.3	7,942.8	2,813.6	582.5	1,078.7	14,005.5	50,519.6
1995-1996	4,826.3	2,046.2	4,234.9	4,268.0	4,810.3	4,501.6	2,133.0	5,896.9	8,045.4	3,439.8	420.9	1,584.1	18,109.7	64,317.3
1996-1997	5,204.0	1,772.1	4,034.3	5,642.2	5,289.3	4,907.8	2,961.3	6,073.4	10,003.7	3,751.0	738.3	1,867.6	23,731.4	75,976.3
1996														
June	561.6	479.0	376.6	534.2	672.2	471.0	350.2	822.2	865.9	311.7	81.3	210.1	1,964.0	7,700.0
July	485.3	175.4	342.6	462.5	510.5	440.8	297.5	625.3	952.0	306.0	27.5	236.8	2,099.1	6,961.2
August	404.7	235.4	468.0	651.2	418.4	500.9	172.7	480.8	719.3	266.6	24.5	144.7	1,068.8	5,555.9
September	392.6	69.0	203.7	420.1	408.7	356.6	290.7	612.5	701.7	240.5	49.1	129.3	1,620.2	5,494.9
October	417.0	103.1	432.1	398.0	439.4	363.4	276.6	289.4	681.9	239.5	41.1	137.9	1,605.7	5,425.0
November	386.0	83.4	413.1	415.3	432.7	356.7	301.1	403.4	804.8	345.6	23.7	133.9	1,596.6	5,696.5
December	398.5	224.9	283.0	579.9	431.5	358.0	284.9	680.3	871.0	346.2	36.4	141.3	2,107.2	6,743.4
1997														
January	348.0	118.7	287.6	369.6	397.3	318.2	238.5	425.6	693.7	362.8	141.2	148.3	1,333.4	5,183.1
February	383.9	107.2	242.7	367.3	437.6	285.8	124.0	330.1	920.5	283.2	29.8	150.2	1,423.7	5,086.0
March	481.5	258.7	313.1	467.5	426.4	309.0	180.7	585.0	947.2	363.4	81.9	168.5	1,793.9	6,376.6
April	521.1	90.3	296.8	435.4	434.3	431.2	214.0	373.9	807.6	322.8	39.9	156.5	2,354.8	6,478.6
May	460.1	219.1	390.1	651.9	462.7	679.1	267.5	441.2	792.5	315.9	81.4	135.8	3,892.4	8,789.7
June	525.4	86.6	361.4	423.4	489.9	508.1	313.0	826.0	1,111.5	358.5	161.5	184.4	2,835.6	8,185.4
July	510.8	236.4	346.7	460.3	498.9	387.2	856.4	575.8	1,101.5	381.7	58.7	200.0	2,456.9	8,073.3
August	387.2	388.3	302.7	753.7	422.0	301.1	182.9	466.3	714.7	359.2	184.5	122.9	2,432.8	7,018.3
STATES — JULY 1997														
N.S.W.	104.9	132.8	77.2	257.9	184.2	122.1	145.5	221.7	442.7	150.1	21.1	55.5	881.4	2,797.1
Vic.	121.5	13.9	139.6	51.8	129.4	86.0	50.1	253.8	159.6	97.3	27.9	38.0	894.8	2,063.5
Qld	149.0	61.6	51.7	87.3	89.2	72.8	614.0	35.9	282.9	64.4	3.2	34.5	366.5	1,912.9
S.A.	59.1	3.2	19.3	32.4	31.0	33.0	19.0	22.3	52.2	27.7	1.7	38.1	80.3	419.3
W.A.	58.4	24.5	51.2	18.2	58.7	51.3	18.1	34.0	119.6	31.2	1.5	20.1	153.9	640.7
Tas.	15.2	—	3.3	2.0	3.3	9.8	3.6	2.2	6.6	6.4	2.7	9.5	16.8	81.3
N.T.	1.2	0.3	0.7	4.7	0.7	6.6	5.3	2.9	4.6	4.4	0.2	0.5	20.3	52.3
A.C.T.	1.6	—	3.7	5.9	2.6	5.7	0.8	3.0	33.5	2.3	0.4	3.9	42.9	106.1
STATES — AUGUST 1997														
N.S.W.	98.5	366.5	51.7	551.0	144.3	98.2	87.7	251.9	274.9	144.4	173.2	31.4	1,288.4	3,562.1
Vic.	84.0	4.5	191.0	71.7	109.3	65.2	33.3	148.8	118.0	85.5	1.3	36.3	507.2	1,456.1
Qld	116.9	0.8	24.1	81.9	79.9	53.7	27.7	21.3	167.0	70.9	2.6	20.9	344.8	1,012.5
S.A.	32.2	0.7	9.3	13.5	32.2	21.1	13.3	13.1	30.5	21.8	3.4	15.9	62.7	269.7
W.A.	40.3	14.6	23.2	27.6	49.8	46.7	15.4	27.0	102.6	26.7	2.7	9.7	161.3	547.5
Tas.	14.0	1.1	2.1	2.5	3.0	7.9	2.5	2.2	10.9	3.5	0.8	3.0	10.4	63.7
N.T.	0.8	—	0.3	3.1	0.5	3.5	2.2	0.4	3.8	3.1	0.2	1.0	23.6	42.4
A.C.T.	0.5	0.1	1.1	2.4	3.0	4.8	0.8	1.5	7.2	3.3	0.5	4.7	34.4	64.2

TABLE 4 — COMMERCIAL FINANCE COMMITMENTS — ALL LENDERS — REVOLVING CREDIT FACILITIES, BY INDUSTRY OF BORROWER (\$ million)

YEARS	Agriculture, forestry, and fishing and hunting	Mining	Manufacturing	Construction	Wholesale trade	Retail trade	Transport and storage	Finance, investment and insurance	Property and business services	Recreation and other services	Public administration	Community services	Other industries	Total
1994-1995	3,294.8	3,937.1	9,171.6	4,700.7	3,651.1	3,588.1	2,013.9	9,719.1	5,463.2	2,990.7	457.7	912.8	3,911.0	53,811.8
1995-1996	3,430.2	6,063.8	13,063.4	4,738.6	4,124.9	3,690.4	1,604.8	11,909.2	6,770.0	3,121.6	1,231.8	1,167.5	14,100.4	75,016.5
1996-1997	3,858.8	6,338.6	9,373.6	5,948.3	3,856.0	3,813.4	4,951.1	14,835.4	10,122.5	4,017.2	915.7	1,130.8	9,398.3	78,559.8
1996	324.0	458.7	1,281.4	636.7	288.9	443.0	402.8	903.7	927.5	216.4	63.9	86.2	808.1	6,841.2
June	444.8	693.5	1,532.3	531.8	264.1	386.0	82.1	1,467.9	1,016.2	214.7	30.7	97.6	834.0	7,595.6
July	221.9	312.9	1,059.7	365.4	314.1	316.9	78.3	1,226.5	717.0	121.4	45.7	87.2	635.0	5,502.1
August	338.6	563.5	602.4	654.0	252.2	234.4	265.5	930.6	751.1	142.4	89.3	72.8	453.3	5,350.3
September	220.4	459.7	773.3	614.9	325.4	627.4	110.0	963.1	549.9	322.1	14.1	90.1	1,030.2	6,100.7
October	350.2	171.6	632.3	450.1	348.9	256.7	222.6	1,529.1	661.1	273.7	25.0	103.4	1,170.9	6,195.7
November	387.1	446.0	565.4	325.5	461.9	425.8	356.8	1,244.5	797.0	264.7	103.9	100.5	724.1	6,203.2
December	315.5	226.3	737.7	439.0	468.8	177.2	1,464.5	958.3	1,112.8	189.5	23.8	97.5	529.9	6,740.8
1997	253.7	240.6	620.7	419.0	450.3	280.7	138.7	1,458.7	975.4	421.7	12.5	55.8	497.2	5,825.1
January	403.8	601.9	607.3	389.6	174.9	234.4	367.7	820.2	632.1	270.9	79.0	76.0	780.3	5,437.9
February	278.2	1,112.1	702.7	541.7	236.1	183.7	310.0	1,237.6	998.8	1,018.7	47.1	79.1	711.7	7,457.5
March	356.8	242.9	936.0	531.0	356.0	422.7	1,080.4	1,496.2	1,235.9	132.2	356.5	135.0	1,386.9	8,668.6
April	287.9	1,267.6	603.6	686.1	203.4	267.4	474.6	1,502.9	675.3	645.0	88.1	135.7	644.7	7,482.3
May	368.1	284.4	1,091.8	895.1	436.7	367.9	275.3	1,727.6	852.2	1,036.8	65.7	111.7	388.3	7,901.6
June	328.6	925.6	906.7	657.0	434.1	294.4	220.7	1,535.6	694.0	505.2	14.1	116.4	891.2	7,523.6
July	82.8	121.9	432.7	721.6	159.2	181.9	200.8	1,360.5	315.0	261.5	50.3	42.6	218.8	4,149.6
August	55.1	41.3	449.9	63.6	215.6	90.6	58.0	280.0	346.6	722.7	11.1	29.6	105.9	2,470.0
N.S.W.	105.2	111.4	143.5	32.6	27.2	35.8	7.1	21.3	116.8	27.3	1.7	16.2	16.1	662.3
Vic.	47.5	1.3	37.9	26.1	8.5	25.5	2.0	11.7	20.5	10.6	0.3	10.5	18.5	220.9
Qld	68.6	8.1	25.3	21.4	19.8	25.4	4.2	50.0	46.9	9.7	2.4	10.2	25.0	317.0
S.A.	5.4	0.2	1.4	1.8	0.5	3.3	0.4	1.4	1.7	1.2	—	0.4	0.3	18.1
W.A.	0.6	0.2	0.7	4.6	0.3	2.9	1.8	2.4	1.8	0.4	—	0.4	3.5	19.5
Tas.	2.7	0.1	0.4	23.2	5.6	2.5	1.0	0.3	3.0	3.5	—	1.8	0.2	44.2
N.T.														
A.C.T.														
STATES — JULY 1997														
N.S.W.	130.4	190.8	533.6	519.4	309.8	149.6	90.4	1,184.8	229.6	399.5	1.9	53.7	438.6	4,232.1
Vic.	41.1	679.1	288.7	77.4	56.4	67.3	114.5	267.3	218.5	57.3	9.1	21.8	295.5	2,193.8
Qld	73.2	52.3	43.1	21.6	18.8	26.4	8.5	26.3	174.7	14.6	—	24.2	8.9	492.6
S.A.	17.3	0.8	17.7	9.4	10.1	13.4	1.4	10.8	14.0	4.2	0.1	3.9	4.0	107.2
W.A.	59.6	2.0	22.0	16.7	34.0	32.5	5.0	43.4	44.2	25.9	3.0	6.4	142.7	437.3
Tas.	6.1	0.5	0.6	1.9	2.4	2.8	0.6	0.4	2.0	1.1	—	3.2	0.5	22.2
N.T.	0.4	0.1	0.2	4.2	0.1	1.1	0.1	2.0	1.8	0.1	—	1.2	0.3	11.6
A.C.T.	0.5	—	0.7	6.5	2.6	1.3	0.1	0.4	9.2	2.3	—	2.1	0.8	26.6
STATES — AUGUST 1997														



For more information . . .

The ABS publishes a wide range of statistics and other information on Australia's economic and social conditions. Details of what is available in various publications and other products can be found in the ABS Catalogue of Publications and Products available from all ABS Offices.

ABS Products and Services

Many standard products are available from ABS bookshops located in each State and Territory. In addition to these products, information tailored to the needs of clients can be obtained on a wide range of media by contacting your nearest ABS Office. The ABS also provides a Subscription Service for standard products and some tailored information services.

National *Dial-a-Statistic* Line

0055 86 400

Steadycom P/L: premium rate 25c/21.4 secs.

This number gives 24-hour access, 365 days a year, for a range of important economic statistics including the CPI.

Internet

<http://www.abs.gov.au>

A wide range of ABS information is available via the Internet, with basic statistics available for each State, Territory and Australia. We also have Key National Indicators, ABS product release details and other information of general interest.

Sales and Inquiries

Keylink STAT.INFO/ABS
X.400 (C:Australia,PUB:Telememo,O:ABS,FN:STAT,SN:INFO)
Internet stat.info@abs.telememo.au

National Mail Order Service (06) 252 5249
Subscription Service 1300 366 323

	Information Inquiries	Bookshop Sales
SYDNEY	(02) 9268 4611	9268 4620
MELBOURNE	(03) 9615 7755	9615 7755
BRISBANE	(07) 3222 6351	3222 6350
PERTH	(09) 360 5140	360 5307
ADELAIDE	(08) 8237 7100	8237 7582
HOBART	(03) 6220 5800	6220 5800
CANBERRA	(06) 252 6627	207 0326
DARWIN	(08) 8943 2111	8943 2111

Information Services, ABS, PO Box 796, Sydney NSW 2001

